

Direct Control District #17
RV Storage
SW 21-38-26-4 Lot 1, Plan 9120003 4.66 Acres

Purpose

- 1.0 To provide for storage of recreation vehicles, campers, motor homes, tents and travel trailers.

Authority

- 2.0 Pursuant to the Land Use Bylaw 2006/6 the Development Officer shall review and approved permitted land uses. The review, approval or refusal of discretionary land uses and the relaxation of development regulations shall rest with the Municipal Planning Commission, except as otherwise provided for in the Land Use Bylaw 2006/6.

Area of Application

- 3.0 This district shall apply to the Lot 1, Plan 9120003 on part of the SW 21-38-26-4, as shown on Schedule A, attached to, and forming part of this DC District # 17

Uses

3.1 Permitted Uses	3.2 Discretionary Uses
Accessory Buildings and Accessory Use Single Detached Dwelling Moved-in Dwelling Manufactured Home Recreation Vehicle Storage Signs	

Site Regulations

4.0 In addition to the Regulations contained in Parts Seven, Eight and Nine, the following regulations shall apply to every development in this district:

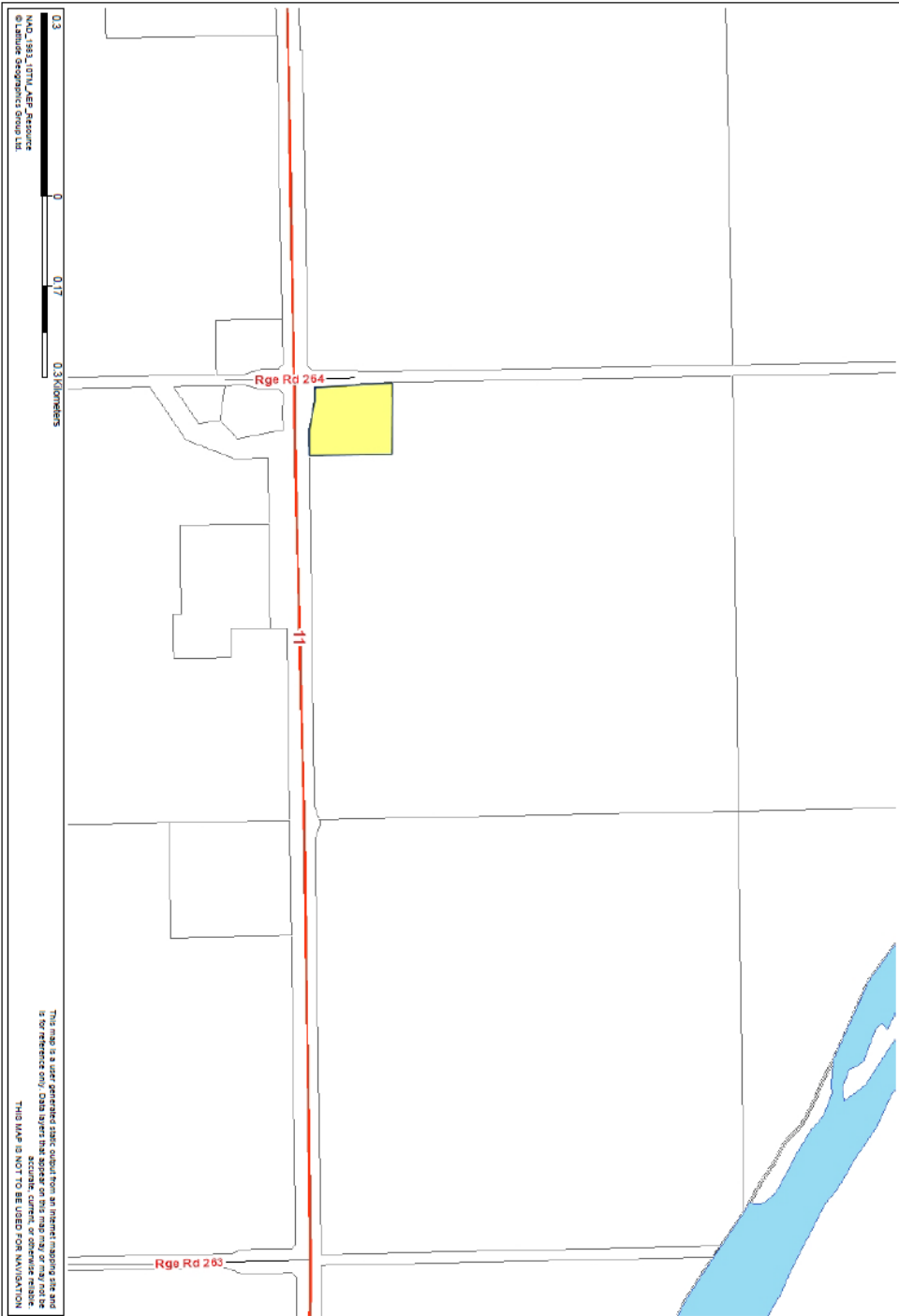
Front Yard Setback (Dwelling)	20 m (66 ft) from a County Road 90 m (295 ft) from a Provincial Highway
Front Yard Setback (RV Storage)	5 m (16.4 ft) from a Provincial Highway
Rear Yard Setback (Minimum)	3 m (10 ft)
Side Yard (minimum)	10 m (32 ft)

Additional Requirements

- 5.0**
1. Maximum number of recreation vehicles allows is twenty-one (21).
 2. No recreation vehicles sales are permitted.



DC D # 17 RV Storage
SW 21-38-26-4 Lot 1, Plan 9120003 4.66 acres



0.3
 0 0.17 0.3 kilometers
 NAD 83, UTM, AZP Projection
 © Lululeme Geographics Group Ltd.

This map is a user-generated static output from an internet mapping site and is for reference only. Data is not guaranteed to be accurate, current, or complete. THIS MAP IS NOT TO BE USED FOR NAVIGATION.

- Legend**
- RoadNetwork**
- Airport Road
 - Arterial Road
 - Avenue Road
 - Interchange Ramp
 - Municipal Main Road
 - Municipal Road
 - Other Jurisdiction Road
 - Primary Highway
 - Primary Highway - Divided
 - Private Road
 - Railroad
 - Secondary Highway
 - Service Road
 - Suburban Road
- Municipal
 - Waterbodies
 - Seals/Alphits
 - Topicals/Phits
 - Parcels
 - Township
 - County

1:6,539
 1:6,539
 This map is a user-generated static output from an internet mapping site and is for reference only. Data is not guaranteed to be accurate, current, or complete. THIS MAP IS NOT TO BE USED FOR NAVIGATION.

This page deliberately left blank
to facilitate double-sided printing