

BYLAW NO. 2017/6

A BYLAW OF RED DEER COUNTY, IN THE PROVINCE OF ALBERTA, FOR THE PURPOSE OF AMENDING BYLAW NO. 2011/16, A BYLAW TO ADOPT THE SYLVAN LAKE / RED DEER COUNTY INTERMUNICIPAL DEVELOPMENT PLAN, WITH AMENDMENTS AND CHANGES.

PURSUANT to the authority conferred upon it by the Municipal Government Act, the Council of Red Deer County hereby enacts as follows:

That Bylaw No. 2011/16, the Sylvan Lake / Red Deer County Intermunicipal Development Plan, as amended, be amended as follows:

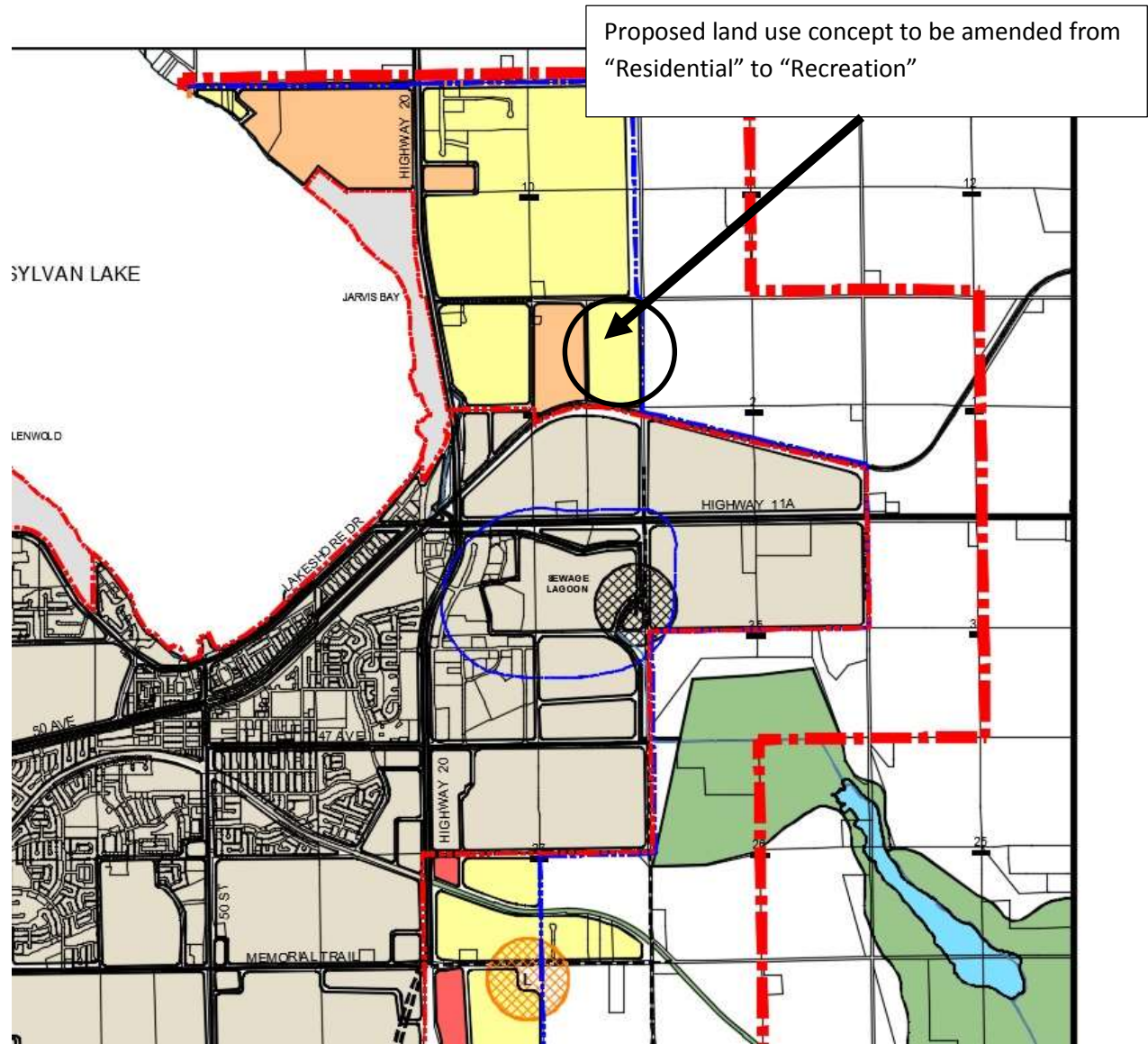
1. Map 1: Land Use Concept - Amend this map to change the land use concept from "Residential" to "Recreation" on NE 3-39-1-5 as shown on the attached Schedule 'A' to this bylaw.

FIRST READING: FEBRUARY 21, 2017
SECOND READING:
THIRD READING:

MAYOR
Date Signed:

COUNTY MANAGER
Date Signed:

BYLAW 2017/6 - SCHEDULE "A"
SUBJECT SITE, NE 3-39-1-W5, LAND USE CONCEPT TO BE AMENDED



SYLVAN LAKE / RED DEER COUNTY INTERMUNICIPAL DEVELOPMENT PLAN

MAP 1: LAND USE CONCEPT

- EXISTING TOWN BOUNDARY
- POTENTIAL FUTURE TOWN BOUNDARY
- - - PLAN AREA BOUNDARY
- - - POTENTIAL JOINT DEVELOPMENT AREA
- - - LACOMBE/RED DEER COUNTY BOUNDARY
- SUMMER VILLAGES - NOT INCLUDED IN PLAN AREA
- COMMERCIAL
- INDUSTRIAL
- RESIDENTIAL
- NATURAL AREAS
- RECREATION AREAS
- PUBLIC / INSTITUTIONAL
- EXISTING TOWN DEVELOPMENT
- RURAL POLICY AREA
- HIGHWAY (EXISTING)
- HIGHWAY (PROPOSED)
- MAJOR ROADWAYS (EXISTING)
- MAJOR ROADWAYS (PROPOSED)
- RAILWAY
- X LANDFILL (SETBACK 300m)
- X WASTE TRANSFER STATION (SETBACK 300m)
- X SEWAGE LAGOON (SETBACK 300m)
- INTERSECTION IMPROVEMENT